



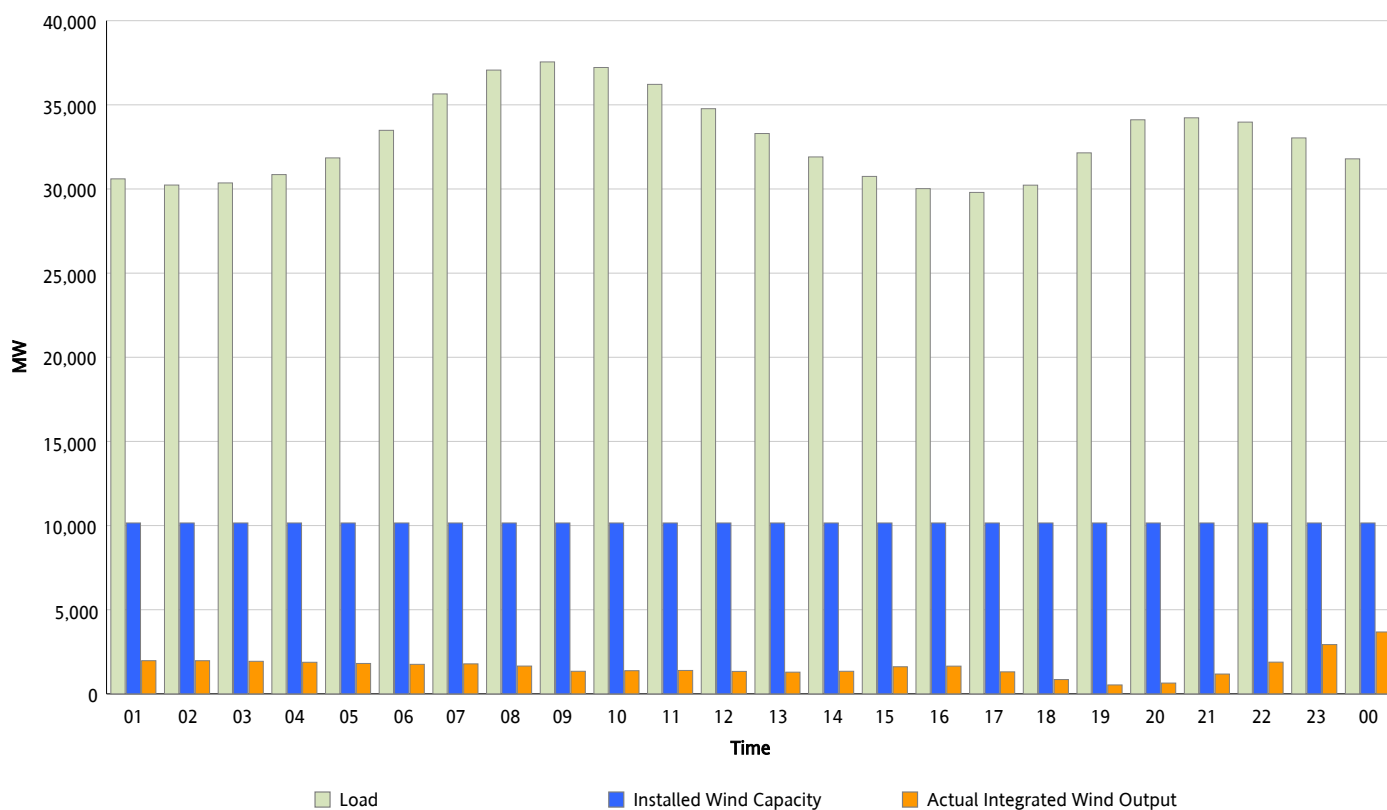
## ERCOT Grid Operations

### Wind Integration Report : 03/02/2013

Peak Load	37,550 MW
Load Peak Hour (HE)	09
Wind Over Peak	1,342 MW
Wind Record 02/09/13	9,481 MW
Max Wind Value*	3,952 MW
Wind Peak Time	23:59
Wind Integration %	12.67 %

#### Hourly Average Actual Load vs. Actual Wind Output

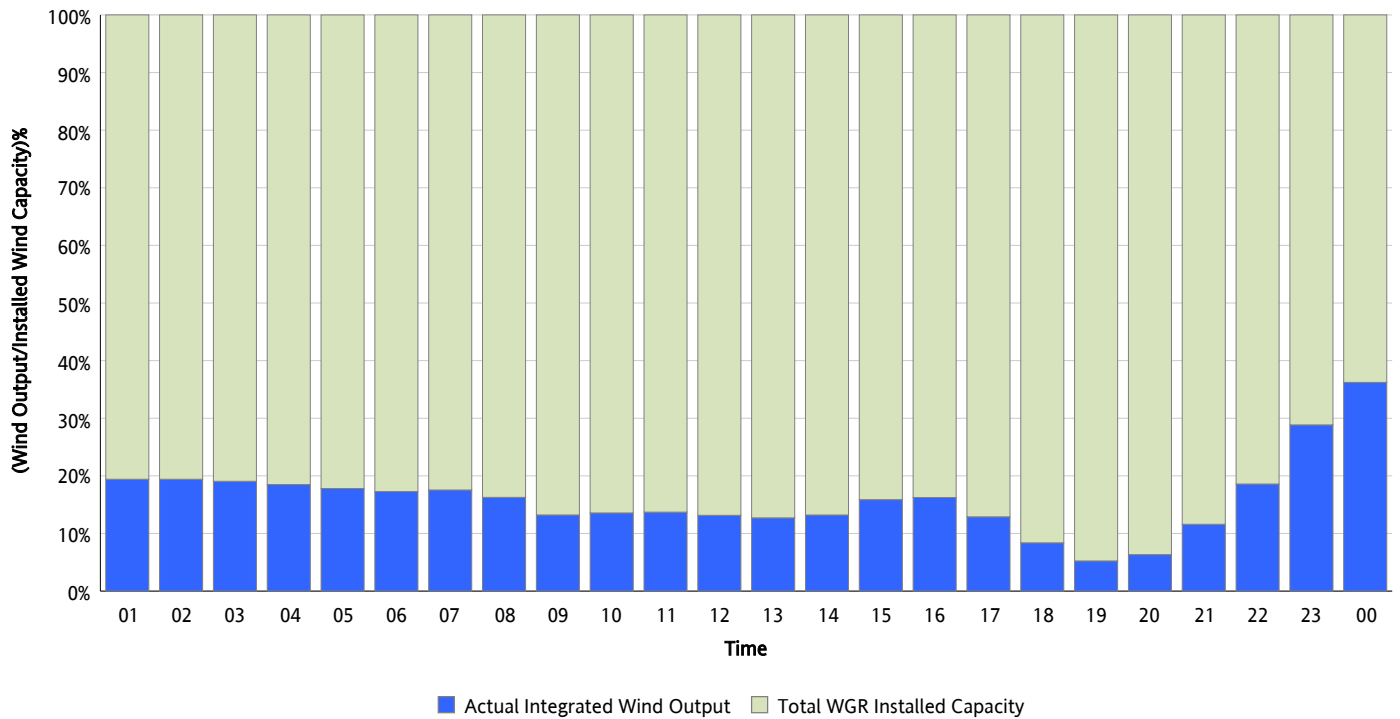
03/02/2013



\* Wind Record and Wind Max represent instantaneous values and the rest of the values are integrated over the hour

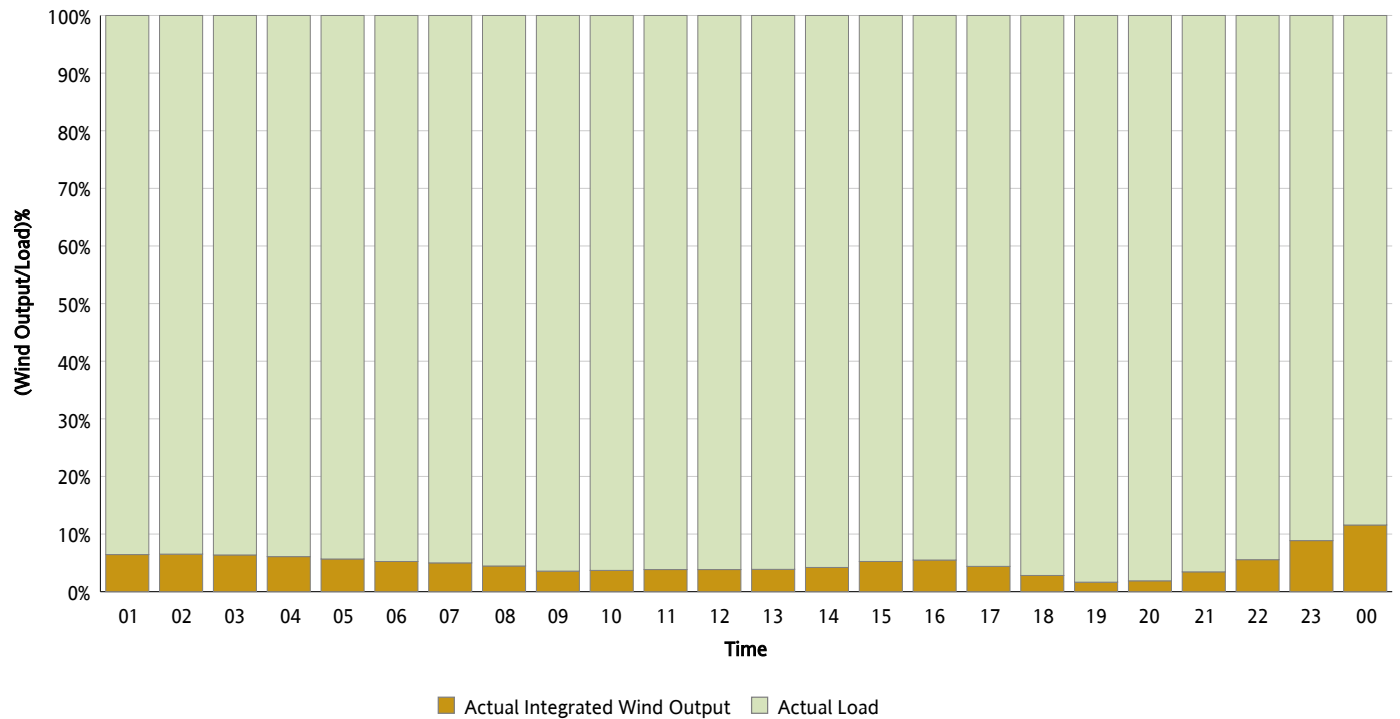
## Actual Wind Output as a Percentage of the Total Installed Wind Capacity

03/02/2013



## Actual Wind Output as a Percentage of the ERCOT Load

03/02/2013



## ERCOT Load vs. Actual Wind Output

02/23/2013 - 03/02/2013

